



**FS ELECTRICAL
& SOLAR SOLUTIONS**

FS ELECTRICAL & SOLAR SOLUTIONS



ABOUT US

FS ELECTRICAL AND SOLAR SOLUTION is committed to providing reliable and modern electrical and energy solutions for homes and businesses. We specialize in complete On-Grid and Hybrid solar systems with lithium battery solutions, along with professional electrical wiring, CCTV installation, and door intercom systems.

Our services also include custom electrical panel manufacturing, ATS panel installation, smart and decorative lighting setups, and professional home maintenance services. With a focus on quality, safety, and industry standards, **FS ELECTRICAL AND SOLAR SOLUTION** aims to deliver efficient and long-lasting solutions for every client



OUR MISSION

At FS ELECTRICAL AND SOLAR SOLUTION, our mission is to provide reliable, safe, and energy-efficient electrical and solar solutions for homes and businesses. We aim to deliver high-quality services, follow proper electrical standards, and help our clients move toward smarter and sustainable energy systems with trust, innovation, and professional workmanship.

OUR VISION

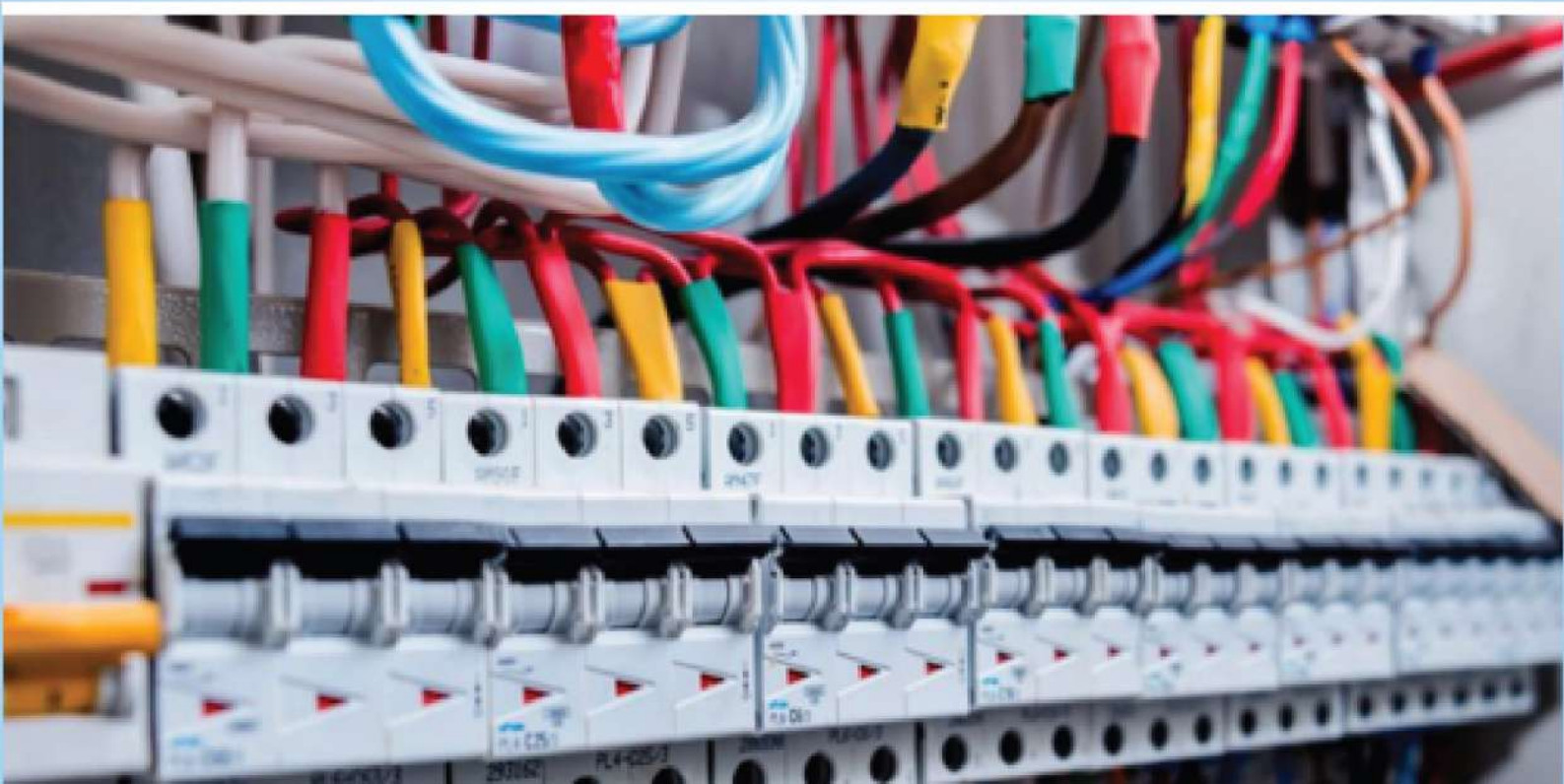
At FS ELECTRICAL AND SOLAR SOLUTION, our vision is to become a trusted leader in electrical and solar services by delivering innovative, reliable, and energy-efficient solutions. We aim to support the future of clean energy while providing safe, modern, and high-quality electrical systems for homes and businesses.



ELECTRICAL WIRING WITH STANDARDS

Electrical Wiring Installation Process (With Standards)

1. **Site Inspection** - Checking the building layout and electrical load requirements.
2. **Electrical Planning** - Designing the wiring layout according to safety standards.
3. **Material Selection** - Using high-quality wires, conduits, switches, and breakers.
 4. **Conduit Installation** - Installing open or concealed conduits properly.
 5. **Cable Pulling & Wiring** - Running electrical cables safely through the conduits.
 6. **Distribution Board Setup** - Installing the main DB and circuit breakers.
 7. **Earthing & Protection** - Proper grounding and safety protection devices.
8. **Testing & Inspection** - Checking voltage, load balance, and safety compliance.
 9. **Final Fixing** - Installing switches, sockets, and electrical fittings.
 10. **System Handover** - Final testing and ensuring safe operation.



CCTV INSTALLATION

CCTV Installation Process

- 1. Site Survey** - Inspecting the location to identify the best camera positions.
- 2. Camera Planning** - Deciding the number and type of cameras required.
- 3. Equipment Selection** - Choosing high-quality cameras, DVR/NVR, cables, and storage.
- 4. Camera Mounting** - Installing cameras at proper angles for maximum coverage.
- 5. Cable Installation** - Running cables neatly and securely to the control unit.
- 6. DVR/NVR Setup** - Installing and configuring the recording system.
- 7. Power & Network Connection** - Connecting cameras to power supply and network.
- 8. System Configuration** - Setting recording, motion detection, and mobile access.
- 9. Testing & Adjustment** - Checking camera angles, video quality, and system performance.
- 10. Client Guidance** - Explaining how to monitor cameras and use the system.



SOLAR SYSTEM ON GRID

- 1. Site Survey & Energy Assessment - Checking the location, roof space, and electricity usage.**
- 2. System Design - Planning the solar system size and selecting suitable equipment.**
- 3. Material Selection - Choosing solar panels, hybrid/on-grid inverter, lithium batteries, and mounting structure.**
- 4. Mounting Structure Installation - Fixing the panel structure securely on the roof.**
- 5. Solar Panel Installation - Installing and aligning panels for maximum sunlight.**
- 6. Inverter & Lithium Battery Setup - Installing the inverter and connecting lithium battery storage.**
- 7. Electrical Wiring & Protection - Safe DC/AC wiring, earthing, and protection devices according to standards.**
- 8. System Connection - Connecting the system with the main distribution board and grid.**
- 9. Testing & Commissioning - Checking system performance and safety.**
- 10. Monitoring & Handover - Setting up monitoring and guiding the client on system use and maintenance.**



DOOR INTERCOM

Door Intercom Installation Process

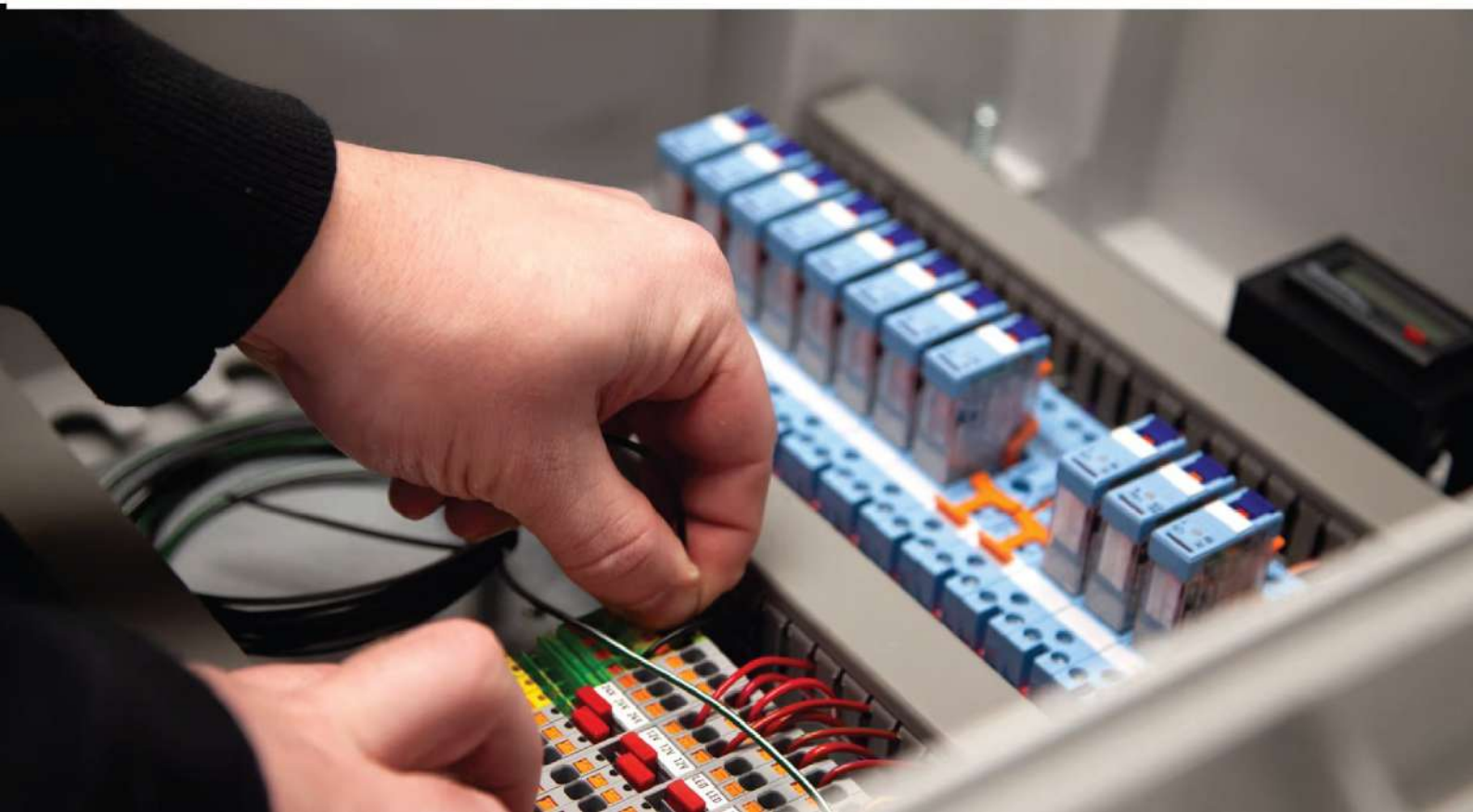
1. **Site Inspection** - Checking the entrance and indoor unit location.
2. **System Planning** - Deciding the suitable type of intercom system.
3. **Equipment Selection** - Choosing high-quality door station, indoor unit, and cables.
4. **Wiring Installation** - Running proper cables between the door unit and indoor unit.
5. **Door Unit Installation** - Installing the intercom panel at the main entrance.
6. **Indoor Unit Setup** - Fixing the monitor or audio unit inside the building.
7. **Power Connection** - Connecting the system to a stable power source.
8. **System Configuration** - Setting communication and door unlock features.
9. **Testing** - Checking audio/video clarity and door unlocking function.
10. **Client Handover** - Guiding the client on how to use the intercom system.



CUSTOMIZED ELECTRICAL PENAL MAKING WITH ELECTRICAL PROTOCOLS

Customized Electrical Panel Installation Process

1. **Requirement Assessment** - Understanding the electrical load and system requirements.
2. **Panel Design** - Designing the customized electrical panel according to electrical protocols and safety standards.
3. **Material Selection** - Selecting high-quality breakers, contactors, relays, and panel components.
4. **Panel Fabrication** - Manufacturing the electrical panel with proper layout and labeling.
5. **Wiring & Assembly** - Installing internal wiring and components inside the panel.
6. **Open/Concealed Preparation** - Preparing the installation area for open or concealed fixing.
7. **Panel Installation** - Fixing the electrical panel securely at the designated location.
8. **Connection with System** - Connecting the panel with the main power supply and circuits.
9. **Testing & Safety Check** - Checking load distribution, safety devices, and system performance.
10. **Final Handover** - Ensuring proper operation and providing guidance to the client.



ATS PENAL

ATS Panel Installation Process

- 1. Load Requirement Assessment** - Analyzing the power load and backup requirements.
- 2. ATS Panel Design** - Designing the Automatic Transfer Switch (ATS) panel according to electrical standards.
- 3. Component Selection** - Selecting quality contactors, breakers, relays, and control units.
- 4. Panel Fabrication** - Assembling the ATS panel with proper wiring and labeling.
- 5. Panel Installation** - Fixing the ATS panel securely near the main distribution board.
- 6. Connection with Power Sources** - Connecting the panel to the main utility supply and generator/backup source.
- 7. Control Wiring Setup** - Installing control wiring for automatic switching.
- 8. System Programming** - Configuring the ATS for automatic power transfer.
- 9. Testing & Safety Check** - Testing automatic switching during power failure and restoration.
- 10. Final Handover** - Ensuring smooth operation and guiding the client on system use.



SMART LIGHTS INTALLATION

Smart & Decorative Lighting Installation Process

- 1. Site Inspection -** Checking the space and lighting requirements.
- 2. Lighting Design Planning -** Deciding the layout for profile lights, fancy lights, and chandelier installations.
- 3. Material Selection -** Choosing high-quality lighting fixtures, drivers, and wiring.
- 4. Electrical Preparation -** Preparing wiring points and switches according to the lighting design.
- 5. Profile Light Installation -** Installing profile lights neatly in ceilings or walls.
- 6. Fancy Light Installation -** Fixing decorative lights to enhance the interior look.
- 7. Chandelier Installation -** Safely mounting chandeliers with proper support and wiring.
- 8. Connection & Control Setup -** Connecting lights with switches or smart controls.
- 9. Testing & Adjustment -** Checking brightness, alignment, and proper functioning.
- 10. Final Handover -** Ensuring safe operation and explaining the lighting controls to the client.



HOME MAINTENANCE SERVICES

At FS ELECTRICAL AND SOLAR SOLUTION, we also provide reliable home maintenance services for all the projects and systems installed by our team. Our maintenance service ensures that solar systems, electrical wiring, CCTV, intercoms, panels, and lighting setups continue to work safely and efficiently. With regular inspection, quick troubleshooting, and professional support, we make sure our clients enjoy long-lasting and trouble-free performance from every installation.

THANK YOU.